

SIGNET

by **omkar** 

A project by ERA Realtors Pvt. Ltd. an Omkar Group Company.

#NothingLikelt



Artist impression

SIGNET

by **omkar**

Welcome to a place where you get everything the way you want.

Signet is a well-appointed 1 & 2 Bedroom boutique residences located in Malad East. Situated next to the W.E.H and upcoming metro station, replete with modern amenities, convenient shopping & much more. Along with uninterrupted views* of the magnificent city skyline, the Gorai Pagoda and the glorious sea line.

An array of international partners ensure a lifestyle beyond expectations. With which you are bound to say 'Nothing Like It'.

*Presently from selected apartments

The site plan illustrates the proposed development layout. It features three towers: Tower A (a stepped structure on the left), Tower B (a long central structure), and Tower C (a stepped structure on the right). A large Podium is located between Tower A and Tower B. A Service Road runs along the bottom of the site. A 9M wide Driveway is shown in the center, leading to a parking area with 16 cars. The parking area is divided into two sections, with cars numbered 58 to 67 and 68 to 73. A Ramp to Alta Monte Phase - 1 is located on the left side, and a Ramp up to Alta Monte Phase - I is on the top left. The site is bordered by a road on the right with an 'IN' and 'OUT' direction. The overall layout is surrounded by landscaping, including trees and shrubs.

*For representation purpose only

AT THE PLACE YOU WANT!

Signet is surrounded by excellent schools and colleges such as Oberoi international, Ryan international, Vibgyor High school, Yashodham High school, Whistling woods. With PVR, Movietime Multiplex, Fun City and amongst the largest malls in suburbs such as Oberoi Mall, Hub Mall, Inorbit and Hypercity

#NothingLikelt





Artist impression

DIRECT ACCESS FROM THE WESTERN EXPRESS HIGHWAY

- 2 mins* drive to entertainment and recreation hot spots
- 3 mins walk to the upcoming metro station
- 10 mins* to surrounding business hubs
- 20 mins* to the Domestic and International airport

*Under normal traffic conditions (except peak hours)



Ovaripada

National Park

Devipada

Magathane

Mahindra & Mahindra

Bandongri

Pushpa Park**Pathan Wadi**

Aarey

Mahanand

JVLR Jn.

Shankarwadi

Andheri Metro (E)

SIGNET
by omkar

In less than three years from now, the city will have its second metro route*.

Work on Mumbai Metro 7, connecting Dahisar East to Andheri East, has started on September 2016*.

*As per media reports

INTERIORS

OPULENT LOBBY



Artist impression

1 BHK - WELL-APPOINTED LIVING ROOM



Artist impression

2 BHK - WELL-DESIGNED LIVING ROOM



Artist impression

2 BHK - POWDER ROOM



Artist impression

2 BHK - USER-FRIENDLY KITCHEN



Artist impression

2 BHK - MASTER BATHROOM



Artist impression



Actual photo taken from 75 Mts.

*Partial views from select apartments

WHERE YOU GET THE LIFESTYLE YOU WANT!

*The Pictorial/other representations herein including layout, facilities, amenities are merely creative imagination and an Architects impression. Actual product may differ from what is indicated herein. The photograph contained herein may be stock /standard photographs used for indicative purpose only to indicate the conceptual lifestyle. For detailed disclaimers please refer to disclaimer clause on the last page of the brochure, all of which will be deemed to be incorporated herein.

Artist impression



FUN AREA FOR KIDS



CHILL BY THE POOL



ACUPRESSURE THERAPY WALKWAY



CALLS FOR A CELEBRATION



DESIGNATED AREA FOR SENIOR CITIZEN'S



WELL EQUIPPED GYMNASIUM



FUN INDOORS



JOGGING TRACK





APARTMENT SPECIFICATIONS

- Efficient Design with no wastage and maximum utilization of Floor plate area.
- Airconditioning in bedroom.
- All toilets & kitchen with Exhaust fan
- Full- Glazed Aluminium sliding windows in living room
- Anodised sliding windows for all other rooms.
- TV points in living and bedroom
- Intercom facility from apartment to reception desk.

FLOORING	Imported Marble in Living Room Vitrified Tiles 2'0"X 2'0" in all rooms Antiskid Vitrified Tiles 2'0"X 2'0" in toilets flooring Designer ceramics tiles to toilet walls/ Dado
CP SANITORY FITTINGS	Jaquar, Essco or equivalent
DOORS	Both side Laminated flush Doors
ELECTRICAL	Concealed Electrical Wiring & with branded modular switches (Panasonic/ Anchor ROMA) Or Equivalent
PAINT	Plastic Emulsion Paint
KITCHEN	Modular Kitchen with Granite Platform & S.S Sink

OTHER BUILDING SPECIFICATIONS

- High-Speed Elevators - 2.5 mtrs. per second
- Well designed Main Entrance lobbies with Imported Marble flooring at Ground floor
- Vitrified Tiles in common Corridor lobbies
- OBD in all common passage and staircase area.
- High Quality external acrylic paint
- Aluminium shuttering construction technique.
- CCTV at entry & exit points and Main Entrance lobbies
- Adequate Multilevel parking facility
- Earthquake resistant structure.

OUR PARTNERS HAVE THE STATURE YOU'D WANT!

#NothingLikelt

CALLISONRTKL
A DESIGN CONSULTANCY OF ARCADIS

Master Layout
(USA)



Design Consultant



Landscape
(Singapore)



Structure



MEP



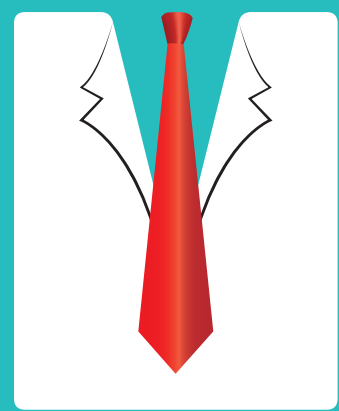
Fitness & Wellness

This project is financed by

Indiabulls
HOUSING FINANCE

REPUTED DEVELOPER

FROM A
NAME
YOU WANT IT FROM!



#NothingLikelt



Since its inception in 2003, Omkar Realtors & Developers has created opulent spaces that have epitomized the pinnacle of luxury. Omkar is managed by second generation entrepreneurs who have carved a niche for themselves in the world of real estate. The management combines a seasoned team of professionals with expertise in real estate, infrastructure, steel manufacturing, oil exploration, shipping, and construction.

BRIEF FACTS ABOUT
OMKAR REALTORS & DEVELOPERS
AND ITS OTHER FLAGSHIP PROJECTS

Over
13 projects delivered across Mumbai

Over
20 Mn. Sq. Ft. Under Development

Additional
60 Mn. Sq. Ft. Upcoming Projects



Our footprint from
Worli to Malad

Flagship Projects of Omkar



Omkar 1973 Worli



Omkar Alta Monte, Malad



Crescent Bay, Parel

Dream Team

- Lead by second generation entrepreneurs
- A strong legacy of over 5 decades
- A pool of talented Professionals from leading Business Schools
- 10000+ workers engaged across projects

Industry Leaders

- **Times Realty Icons Awards 2016**
Best Super Luxury Residential Development - Omkar 1973
- **Construction Times Builders Award 2015**
Best upcoming Residential Project 2015 - Alta Monte
- **SKOCH Renaissance Gold Award**
Redevelopment Project of the Year
- **Realty Plus Excellence Awards 2014**
Developer of the Year - Residential

Working with the Best

DESIGN



ESPA



MEDIA



INFRASTRUCTURE



FINANCE





A project by ERA Realtors Pvt. Ltd. an Omkar Group Company.

This project is financed by Indiabulls Housing Finance Limited

Project registered with MahaRERA. Registration No.: P51800010463

Site: Signet by Omkar, On Western Express Highway, Malad (E), Mumbai

Head office: Omkar Realtors & Developers Pvt. Ltd., Omkar House, Off Eastern Express Highway, Sion (E), Mumbai

Disclaimer: All the plans, designs, images, specifications, dimensions, facilities and other details herein are purely indicative in nature and the intended recipient should note that these are to be treated as purely provisional and informative and as such only tentative subject to the approval from respective Authorities. We reserve the right to modify / change / amend / alter any of the aforesaid in the best interest of the development without prior intimation / notice and without any obligation. The contents herein should not be construed as an offer / invitation to offer / contract. Any party desirous / interested in the project need to enter in to Agreement for Sale and its development/transaction shall be governed by the terms and conditions of the Agreement for Sale. This printed material inter alia images, contents therein is for representative purpose only. For internal circulation purpose only. Government Fees & Taxes are Extra (As Applicable), Stamp Duty, Service Tax, VAT & Registration Charges as applicable, Other Charges Payable at the time of Possession, Conditions apply.