

LUXURY RESIDES HERE WITH
AFFORDABILITY



SHRI RADHA
**SKY
PARK**
SHRI RADHA SKY GARDENS-PHASE II




Panorama of breathtaking splendor

BUDGET FRIENDLY HOMES | 1-2-3 BHK Luxury Apartments | Double Height Entrance Lobby | 3.5 Acres of Multi-purpose Central Open and Green Area | Commercial Region | Gated Community | 3-tier security

Surrounded by beautiful nature crafted for eternal pleasure

Trellis & Seat | Pedestrian Junction | Jogging Track | Kid's Play & Swing | Pool Deck | Swimming Pool | Kid's Pool | Water Body & Fountain | Public Lawn | Portal Wall & Seating | Fragrance Garden | Boundary Plantation & Buffer | Topiary Garden | Pedestrian Junction | Climbing Wall & Play









30,000 Sq.ft, Clubhouse largest in the vicinity



Retail Shops

	599 SQ.FT.
	870 SQ.FT.
	945 SQ.FT.
	1095 SQ.FT.

Legends

1. Entry & Guard Room
2. Entrance Plaza & Garden
3. Central Boulevard (FT)
4. Tower Entries & Drop OFF
5. Tennis Court
6. Cricket Nets
7. Trellis & Seat
8. Open Gym
9. Pedestrian Junction
10. Jogging Track
11. Kid's Play & Swing
12. Climbing Wall & Play
13. Change Rooms
14. Pool Deck
15. Swimming Pool
16. Kid's Pool
17. Water Body & Fountain
18. Screen Mounds
19. Public Lawn
20. Topiary Garden
21. Portal Wall & Seating
22. Fragrance Garden
23. Double Height Entrance Lobby
24. Parking
25. Boundary Plantation & Buffer
26. Commercial Region
27. Commercial & Milk Booth
28. Exit Plaza



1 BLK (TYPE I) - Unit No.1 at Ground, 4th to 27th Floor Unit No.2,4,5,7 & 8 from Ground to 27th Floor
Unit No.3 from 2nd to 27th Floor Tower No. A4

Total Area - 55.65 sq.mt. (599 sq.ft.) Carpet Area - 33.02 sq.mt. (355 sq.ft.) Balcony Area - 6.81 sq. mt. (73 sq.ft.)
1 Bed Room • 1 Study Room • Lobby • 1 Toilet • 2 Balconies

SHRI RADHA
SKY
PARK
SHRI RADHA SKY GARDENS-PHASE II



1 Sq.Mt. = 10.764 Sq.Ft.

2 BHK (TYPE 2) - Unit No.2 & 3 from 3rd to 29th Floor Tower No. A1, A2 & A3
 Total Area - 80.82 sq.mt. (870 sq.ft.) Carpet Area - 47.94 sq.mt. (516 sq.ft.) Balcony Area - 9.84 sq. mt. (105 sq.ft.)
 2 Bed Room • Drawing/Dining • Kitchen • 2 Toilets • 2 Balconies

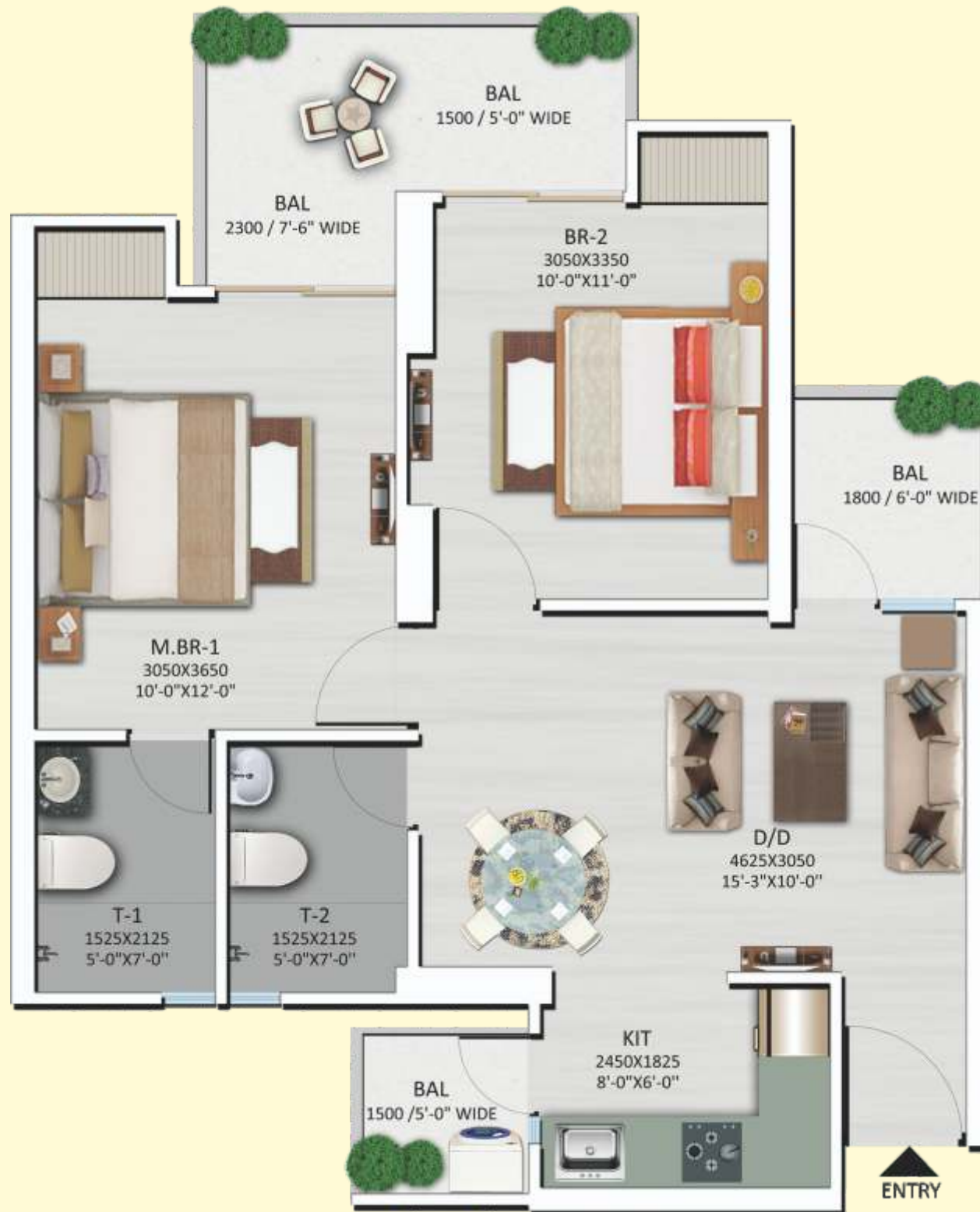
SHRI RADHA
**SKY
 PARK**
 SHRI RADHA SKY GARDENS-PHASE II



1 Sq.Mt. = 10.764 Sq.Ft.

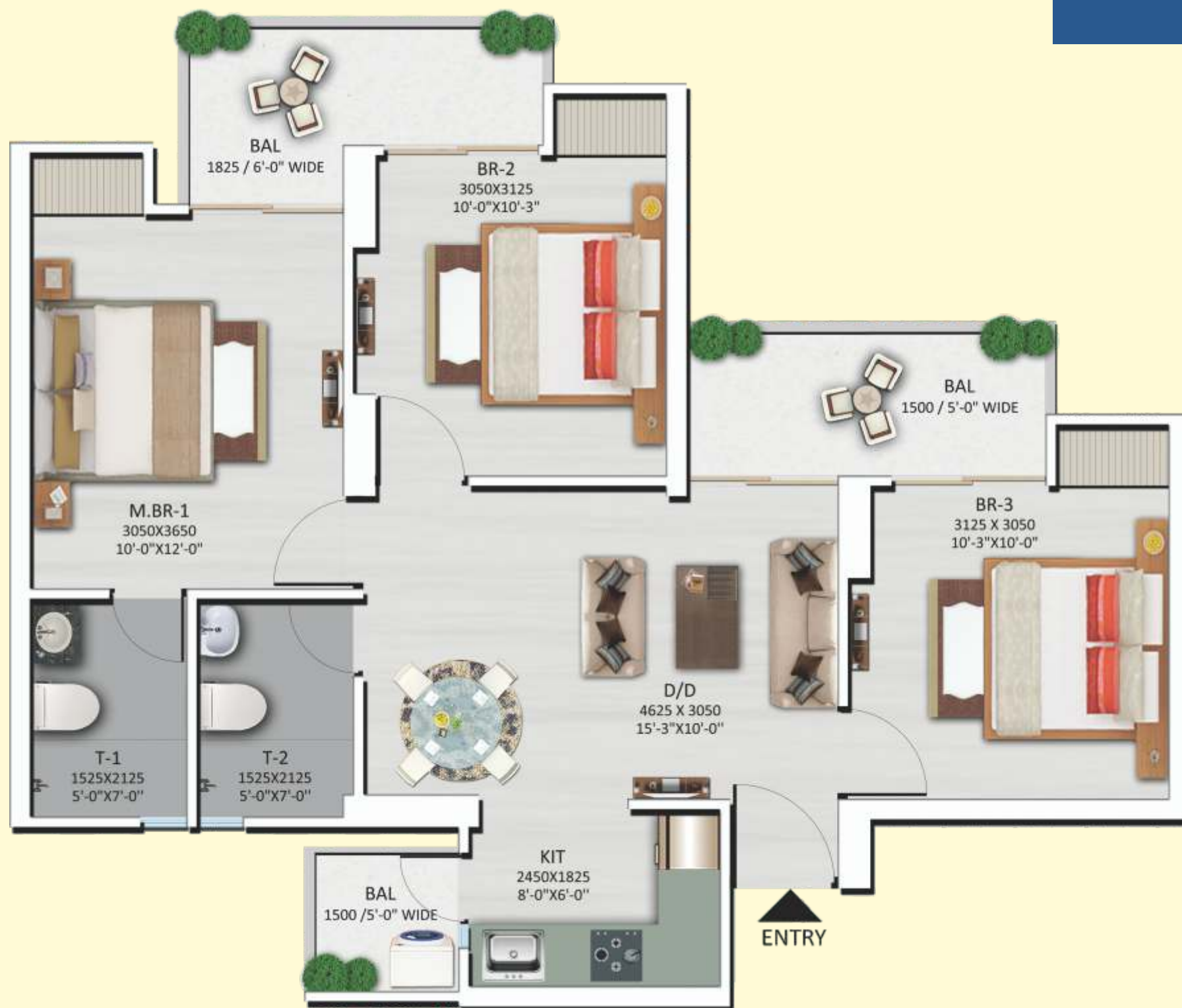
2 BHK (TYPE I) - Unit No.1 from Ground to 29th Floor Unit No.4 at Ground, 4th to 29th Floor
 Unit No.6 & 7 from Ground to 26th Floor Tower No. A1
 Unit No. 1 & 4 at Ground, 4th to 29th Floor Unit No.6 & 7 from Ground to 26th Floor
 Tower No. A2 & A3

Total Area - 87.79 sq.mt. (945 sq.ft.) Carpet Area - 50.51 sq.mt. (543 sq.ft.) Balcony Area - 12.11 sq. mt. (130 sq.ft.)
 2 Bed Room • Drawing/Dining • Kitchen • 2 Toilets • 3 Balconies



3 BHK (TYPE I) - Unit No.5 & 8 from Ground to 29th Floor Tower No. A1, A2 & A3
 Total Area - 101.73 sq.mt. (1095 sq.ft.) Carpet Area - 59.68 sq.mt. (642 sq.ft.) Balcony Area - 12.94 sq. mt. (139 sq.ft.)
 3 Bed Room • Drawing / Dining • Kitchen • 2 Toilets • 3 Balconies

SHRI RADHA
**SKY
 PARK**
 SHRI RADHA SKY GARDENS-PHASE II



1 Sq.Mt. = 10.764 Sq.Ft.

Specifications

FLOORING Vitrified tiles flooring in bedrooms, kitchen & drawing room Ceramic Tiles in Bathrooms and the balconies	DOORS & WINDOWS Outer doors and windows aluminium powder coated/UPVC Internal door frames made of Maranti or equivalent Internal doors made of painted flush door Main entry door frame of maranti with flush door Hardware fitting of reputed make
WALL & CEILING FINISH POP finish walls & ceiling with OBD	
KITCHEN Granite working top with stainless steel sink 2'-0" dado above the working top of counter	ELECTRICAL Copper wire in PVC conduits with MCB supported circuits and power, light points in wall
TOILETS Ceramic Tiles on dado Sanitary ware with EWC, CP fitting and mirrors in all toilets	TELEPHONE Provision of telephone points



Attractive Location Feasibility

Prime location of Greater Noida (W) | Walking distance from proposed metro station | In close proximity to Delhi, Noida & Ghaziabad | Public transport available for easy commutation | Adjacent to Noida and at a mere 18 kms distance from Delhi - NDLS Railway Station is 27 kms & IGI Airport 38.2 kms.